

# NU‘UANU CALLER

A monthly newsletter of Nu‘uanu Congregational Church  
2651 Pali Highway \* Honolulu, HI 96817



VOL. 64, NO. 4

APRIL 2021



## The Constant Gardener By Pastor Jeannie Thompson

One of my favorite hymns to sing at Easter is #238 in *The New Century Hymnal*, “Now the Green Blade Rises.” I like the lively melody which, apparently, was appropriated from a 15<sup>th</sup> French Christmas carol. It sounds like an old country folk dance. The notes fairly frolic and gambol across the page. I have a hard time suppressing a smile whenever I sing it.

The lyrics tell us that Christ’s resurrection is like growing grain—it persists despite everything, even death: *Now the green blade rises from the buried grain; Wheat that in dark earth for many days has lain; Love lives again, that with the dead has been: Love will come again like wheat that rises green.*

The song appears to describe the winter wheat that is grown throughout the northern plains. The seed is sown in the fall, sometimes as late as October. The plants germinate early and somehow manage to live through the winter—even buried under the snow and in temperatures that often dip well below zero.

It does not seem possible for anything to survive such extreme weather. Not only does it survive, winter wheat provides a living for a great many farmers. It is often planted to prevent erosion and is a good way to build and cycle nutrients through the soil, and of course after it is milled it becomes the main ingredient in bread, the staff of life.

I suspect that John M. C. Crum, the English cleric who wrote the lyrics, was a farmer in addition to being a priest. His understanding and appreciation of the beneficial qualities of winter wheat seems quite thorough. I can well imagine him planting such a crop and wondering over the way in which it reflects the resurrection.

When you think about it, farming and gardening are both a lesson on the persistence of life. On farms and in gardens, life is constantly confounding death, is constantly finding a way back into being. Given even just a little room and some moisture, seeds sprout and begin reaching up toward light and warmth. (Think of the many times you have seen grass—even whole plants—growing up through cement.)

God’s love is just like this: it will not give up. Even when it seems dead and all is lost, it makes its way back—“*love lives again that with the dead has been.*”

(Continued on page - 5, Gardner)

Nu‘uanu Caller is a monthly publication of Nu‘uanu Congregational Church, founded in 1885 and organized in 1892 (United Church of Christ, a 1957 union of the Evangelical and Reformed Church and the Congregational Churches). Rev. Jeannie Thompson, *Pastor*; Mairi Manley, *Administrative Coordinator*; Nelson Fujinaga, *Custodian*; Le Huynh, *Groundskeeper & Security*.

Web site: [nuuanu.org](http://nuuanu.org) • Email: [nccadmin@hawaiiintel.net](mailto:nccadmin@hawaiiintel.net) • Phone: (808) 595-3935



## Worship Schedule

**9:00 a.m. Worship Service**

**1st Sunday of the month:**

**9:00 a.m. Communion Service**

## Stewardship

by Lori Yamashiro

For some reason, when folks hear the word "stewardship". they immediately think of the annual stewardship drive. And no one wants to serve on the Stewardship Committee, much less chair it because you have to ask for money. So why would I volunteer to do this? Because I believe stewardship is much more than the annual stewardship drive. Stewardship is more than just money. It's about ALL gifts that we bring. Gifts of our time, ideas, money, possessions, attention, encouragement, emotional support, and more. Without stewardship, we could not do the ministry of the church.

Having said that, one aspect of stewardship is finances. In order to be more transparent about our financial situation, every quarter you'll be receiving your giving statement along with a snapshot of where the church is financially. The purpose is two-fold: 1) you receive a quarterly statement of your giving so if there are any discrepancies, we can clear it up faster and it's a reminder in case you missed a period of giving, 2) you will see where the church is financially every quarter instead of waiting until the annual meeting. We hope that you will find this helpful.

During this time when we have not been able to worship together in-person, the extra effort you continue to make to honor your financial commitment to NCC is greatly appreciated! We do hope to be together again sooner rather than later but in the meantime, let's continue to be good stewards of our finances, our facilities and our friends.

## Green Day April 24, 2021.

Time: 9:00 am to 12:00 pm

Pickup and purchase plants and a few treasures

Due to COVID19, Green Day will be a virtual shopping and pickup will be on Saturday, April 24, 2021 from 9:00 am to 12:00 pm. We will have plants to purchase on pickup day.

How does a virtual Green Day work? Pictures will be posted on Facebook Market on April 17, 2021.

Reserve the days, April 17 thru April 24, 2021, you may view items that are on sale.

We will provide a link to the Facebook Market page. Items may be reserved by messaging Becky Kanenaka. You may pay for items via VENMO or Apple Pay, or you can pay for the items on April 24 from 9:00 am to 12:00 by cash.

Email Becky; [ken214@hawaii.rr.com](mailto:ken214@hawaii.rr.com) or text 808.282.4321 what items you would like to purchase.

Pickup of the items you purchased will be on April 24, 2021 between 9:00 am to 12:00 pm.

Please support Nuuanu Congregational Church's 1<sup>st</sup> Virtual Green Day!

## NCC's Vision Statement

*Nuʻuanu Congregational Church is a diverse, open congregation of faithful Christians who seek to:*

- *affirm all persons as children of God;*
- *respond to the needs of the community and congregation;*
- *respect all views and ideas;*
- *make and nurture disciples; and*
- *spread God's word using our talents and resources.*

(Approved September 16, 2007 at the Special Congregational Meeting.)

---

**March 21, 2021**
**From the Moderator's Desk**

I just heard on Hawaii Public Radio how the product, Zoom has changed so many people's lives over this past pandemic year. I totally understand this phenomenon. Not only for my counseling job, but Zoom has allowed me to continue teaching classes as well as weekly church meetings without skipping a beat. It has been profound how this product has become a part of my daily life.

That being said, we have much to be grateful for. Now we are focused on presenting the congregation with a Strategic Plan and engaging you in discussion on what it means to all of us. It has been months of Zoom meetings, phone calls and diving into heavy discussions on how Nuʻuanu Congregational Church will get to that missional future. We are planning to send out the Strategic plan as well as the details for the next Zoom Town Hall for questions and discussion on the plan. More soon.

Now onto finances, we received the first Payroll Protection Program loan of **\$42,390.00** last year because of the losses in revenue. The City and County Grant was also applied for and \$10,000 was granted to us and received before the end of 2020. This grant and PPP loan forgiveness amounts to **\$52,390.00 for 2020**.

Recently, the second PPP loan forgiveness program was sought for consideration. NCC was found eligible for the second loan forgiveness program and was applied to. Two weeks ago, I received notice that we obtained that sum of **\$33,757.00** that was deposited into our account. **We have received a total of \$85,147 in PPP funds to help cover payroll and benefits for our NCC Staff for parts of 2020.**

I will be working on the application for forgiveness of the first loan as it now is available. This is to assure that we can be "forgiven" for the funds provided to NCC by the Small Business Administration through the federal government.

This weekend two vaccinated Kupuna of our church and in Missions Committee, Joyce Uyehara and Micki Sasaki spent their Saturday with me getting ready for the April 24 Virtual Green Day by making succulent gardens to pre-sell and sell at that Virtual Green Day. Some have already been sold! This was a way to remind myself that one day we can be all together enjoying each other's company and in worship.

Though we haven't seen all of your faces in worship due to the only online services we have been thoughtful of all of you in our church's work and our focus on NCC's day to day life and future. I ask for your continued support and prayers for all of the stewards of NCC and congregation as we work together for the spiritual needs and financial health of our church.

In prayer and hope,

Laurie Hamano  
Moderator





## Ohana Ministry

*By Marge Honjiyo*

If there are needs that Ohana Ministry can help you with, call one of the coordinators:

### Ohana Ministry Coordinators

**Mae Au, 988-4802**

**Marge Honjiyo, 550-3075**

**Mary Ann Saito, 839-0895**

**Sets Takahashi, 550-3062**

**Joyce Uyehara, 523-3483**

**Lori Yamashiro, 292-5249**

When you pray, remember the following and their caregivers: **Kimiko Bristow-Canfield, Marcia Grimsley, Carol Hamada, Charlene Hasegawa, Preston Iha, Howard Ishihara, Michael Kurokawa, Leslie Lum, Craig Oshiro, Mary Oshiro, Matthew Stucke, and Marie Yoneshige, Lurline Matsumoto (sister of Masa Tabe), Rick Au, Stephen Crosier, Fay Matsuura (Friend of Clifford Lum)**

Reminder: Names are added or deleted in the Prayer Corner by individuals, family members or friend. Please inform the Ohana Ministry coordinators if you want your name included or deleted in the Prayer Corner.

### Prayer Corner

*By Mary Ann Saito*

As they entered the tomb, they saw a young man, dressed in a white robe, sitting on the right side; and they were alarmed. But he said to them, “Do not be alarmed; you are looking for Jesus of Nazareth, who was crucified. He has been raised; he is not here. Look, there is the place they laid him. Mark 16:5-6

Dear God, with your abounding love for humankind you gifted us with your son, Jesus Christ our Savior, whose death and resurrection assured all believers everlasting life. We are blessed and thankful and pray that Jesus’ teachings will continue to guide us. As we celebrate Earth Day later this month we pray for our planet earth. We are reminded about earth’s destruction and the inevitability of extreme weather events caused by climate change. Enable all participants in the Paris Climate Agreement to take aggressive actions to slow the effects of climate change throughout the world. Empower each of us to do our part by following recommended practices and changing the way we do things if necessary. Amen

ALLELUIA! CHRIST IS RISEN!



## Special Gifts

*Give thanks to God whose steadfast love endures forever!*

### Memorial Offering

Micki Sasaki IMO - Eiko Soranaka

### Thanks

Paula Yamamoto

Gail Wenos

### Birthday

George Naito

Frances Ito

Fran Yano

Stuart Fujioka

Setsuko Takahashi



## Deadline for Articles

*Nuʻuanu Caller* (monthly)  
20th of each month.

*NCC News* (weekly)  
Wednesday noon.

Articles will be edited on a space  
available basis.

## Correction Needed

This is a correction to the Caller's  
Council's description of the  
annual meeting's vote regarding  
the budget. The vote was not  
unanimous due to one objection.  
Council

## Recycling

*By Wayne Kobayashi*

### Bring your items by Sunday, April 25

Please help our  
volunteers by removing  
caps from bottles, rinsing  
and separating all  
containers. Keep labels  
on. Only HI-5¢ items are  
accepted. Proceeds go  
toward Hui Malama.



## Joint Good Friday Drive-Thru Service

April 2, 2021

6:00 pm Drive-Thru

On Good Friday, we commemorate the day Jesus suffered and died by crucifixion. The Friday before Easter is called “good” because Jesus willingly endured the shame of the cross in order that all of creation might be freed from the power of sin. Good Friday reminds us that while the grace of God is given freely, it is not cheap. Love invites us to open ourselves fully and give ourselves completely.

Join UCC-Judd Street, Nuʻuanu Congregational Church and Central Union Church for a drive-thru Stations of the Cross service on the Central Union campus. Enter from the Punahou Street, tune your FM radio to 88.5, and drive through our seven sacred-art stations around the Great Lawn. A document with accompanying scripture and reflections will be available on our website. At the final station you will be served Holy Communion.

## Gardener (Continued from Page 1)

If that were all there was to this story, that would be a lot! However, the rest of the story—the rest of Christ’s story involves you and me. Our lives are God’s garden. Love is the seed that has been planted in us. Yours may still be a full and vibrant garden, or a field of stubble but even now slender green tendrils of life are making their toward the light. New life is coming and will not be denied because God’s love will find a way to push past all obstacles.

Perhaps that is why our story with God began in a garden.

In the Gospel of John, perhaps Mary was not wrong when she mistook Jesus for the gardener on Easter morning.

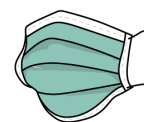
God is a constant gardener who continues to cultivate new life in the world...and in the hearts and lives of each of us. What we will be we cannot know right now. I pray that it is enough to simply know that life, new life is emerging right now within us. Our Constant Gardener is tending to us even now, and where God has planted and tended, expect a bumper crop!

Many blessings to you and your families this Easter.

Grace and Peace,  
Pastor Jeannie

## Wear a mask!

Cover your nose and mouth



## Wait 6 feet apart!

Avoid close contact



## Wash your hands!

Or use hand sanitizer





**Nu'uaniu Congregational Church**  
**2651 Pali Highway \* Honolulu, HI 96817**

NONPROFIT  
ORGANIZATION  
U.S. POSTAGE  
**PAID**  
HONOLULU HI  
PERMIT NO. 354

**Address Service Requested**

**April 2021**

To discontinue receiving the  
*Nu'uaniu Caller*, please call the  
church office at 595-3935 or email:  
[nccadmin@hawaiiantel.net](mailto:nccadmin@hawaiiantel.net).

---

### **Lectionary Readings for April**

**April 1 (Maundy Thursday):** Ex 12:1-4, (5-10), 11-14 • Ps 116:1-2, 12-19 • 1 Cor 11:23-26 •  
Jn 13:1-17, 31b-35

**April 2 (Good Friday):** Isa 52:13-53:12 • Ps 22 • Heb 10:16-25 or Heb 4:14-16; 5:7-9 •  
Jn 18 1-19:42

**April 3 (Holy Saturday):** Job 14:1-14 or Lam 3:1-9, 19-24 • Ps 31:1-4, 15-16 • 1 Peter 4:1-8 •  
Matt 27:57-66 or Jn 19:38-42

**April 4 (Now What?):** Acts 10:34-43 or Isa 25:6-9 • Ps 118:1-2, 14-24 • 1 Cor 15:1-11 or Acts  
10:34-43 • Jn 20:1-18 or **Mk 16:1-8**

**April 11 (Marks of Faith):** Acts 4:32-35 • Ps 133 • 1 Jn 1:1-2:2 • **Jn 20:19-31**

**April 18 (Christ Among Us):** Acts 3:12-19 • Ps 4 • 1 Jn 3:1-7 • **Luke 24:36b-48**

**April 25 (Enfolded by Love):** Acts 4:5-12 • Ps 23 • 1 Jn 3:16-24 • **Jn 10:11-18**